

A hand holds a yellow and black Midland X-Talker 5 radio in the foreground. The radio's screen displays the number '2'. The background is a scenic mountain landscape with evergreen trees and a cloudy sky. The text 'NRG RADIO COMMUNICATIONS' is overlaid on the right side of the image.

# NRG RADIO COMMUNICATIONS

**NRGMarin.org**

Ver. 6

# MENUS

Tap **MENU** to enter menu mode and cycle through the menu items.

Use **ARROWS** to change a setting.

Press **MENU** again to move to the next menu item.

Click **PTT** to save and exit menus.



# CHANNEL

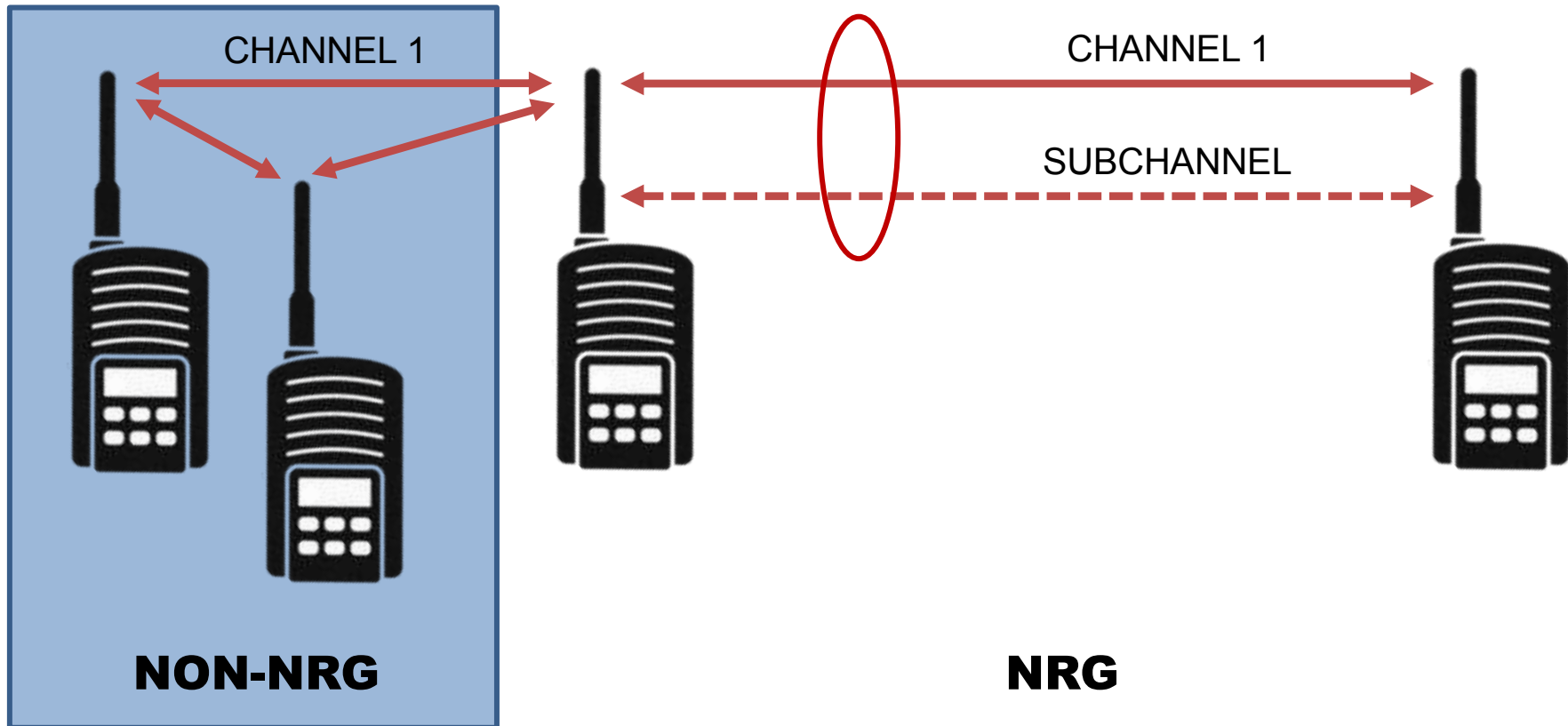
Tap **MENU** to enter menus. Channel number is the first menu item. It will blink.

Use **ARROWS** to change channel up or down to the one assigned to your NRG.

Click **PTT** to save and exit.



# WHAT IS A SUBCHANNEL?



## SEPARATES USERS ON THE SAME CHANNEL

Also known as a CTCSS tone, code, or "PL" | Separation, not privacy | Tone is inaudible



# SUBCHANNEL (CTCSS/TONE/CODE/PL)

Tap **MENU** repeatedly until you see a small “Of” “Ct” or “Dc”.

Use **ARROWS** to select **CTCSS**.

Press **MENU** once more.

Use arrows to select the subchannel assigned for your NRG.

Click **PTT** to save and exit.



# POWER LEVEL

Tap **MENU** repeatedly to navigate to **Pr** menu item.

Use **ARROWS** to toggle through power levels: **Low**, **Medium** or **High**.

Click **PTT** to save and exit.

---

*NOTE: Not all channels allow the power level to be adjusted, per FCC regulations.*



# WEATHER RADIO

Press **MENU** *continuously* until this icon appears:



then release.

Radio will now tune to the best available weather channel.

Display will blink while in Weather mode.

Click **PTT** to exit Weather mode.



# BEEP TONES

## “BEEP” AND “ROGER BEEP”

Tap **MENU** repeatedly to navigate to **bP** menu item.

Use **ARROWS** to select **On**.

Press **MENU** to navigate to **rb** menu item.

Use **ARROWS** to select **Off**.

Click **PTT** to save and exit.





# GROUPS

**MENU** repeatedly to navigate to **Gr** menu.

Use **ARROWS** to select **Off**.

Click **PTT** to save and exit.



# VOX AND WHISPER

Tap **MENU** repeatedly to navigate to **VOX** menu.

Use **ARROWS** to set to **Off**.

Tap **MENU** repeatedly until small **WI** blinks near top of display.

Use **ARROWS** to set to **Off**.

Click **PTT** to save and exit.



# VIBRATE

Tap **MENU** repeatedly to navigate to **Bp** menu item.

Use **ARROWS** to select **Ub**.

Use **ARROWS** to select **Off**.

Click **PTT** to save and exit.





**NO**  
Unwanted  
features  
are on.

**YES**  
(But your  
channels  
may vary.)





# LOCKING THE RADIO

Press and *hold* the **CALL** button

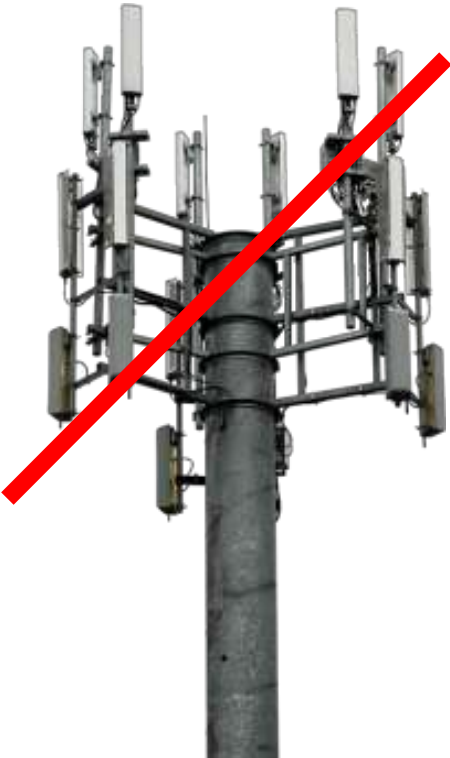
Release when the lock icon appears.

Press and *hold* the **CALL** button again to unlock the radio.



# WHY USE RADIOS?

Can operate  
without infrastructure.



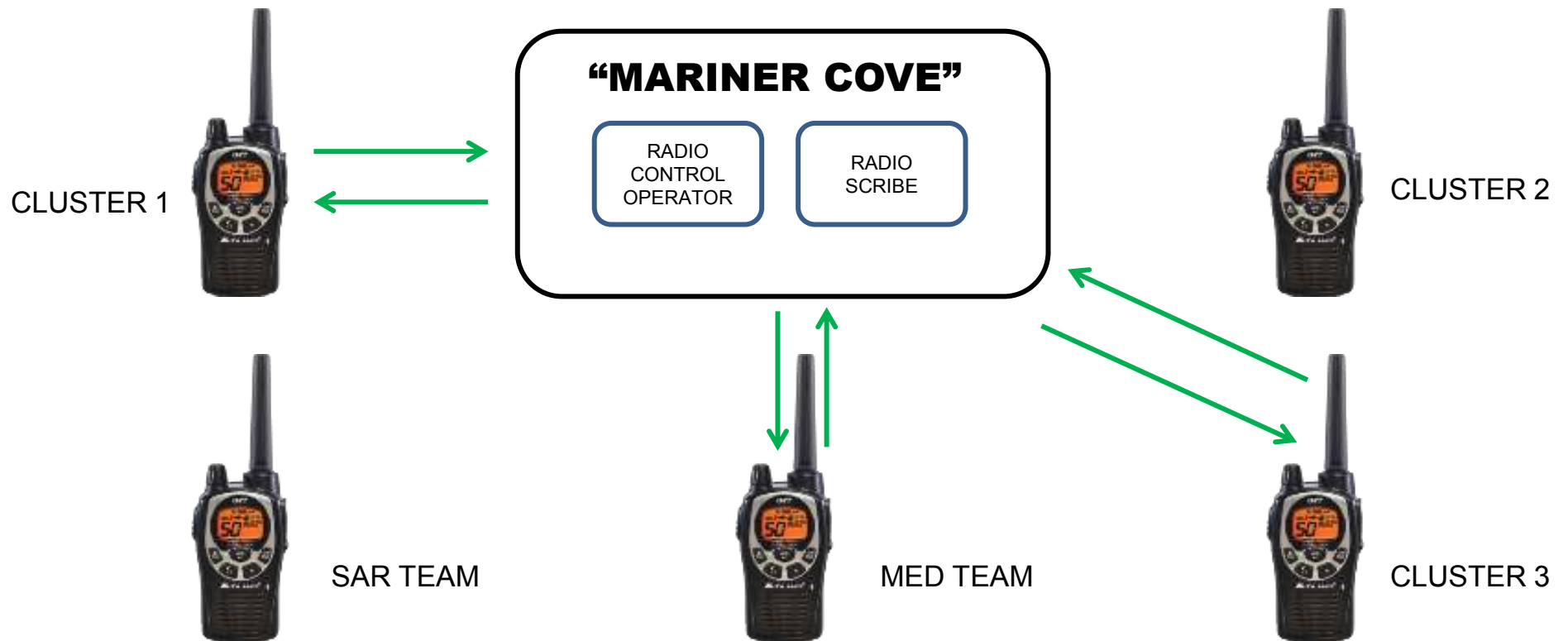
Run on  
replaceable batteries.



Communicate to  
many people at once.



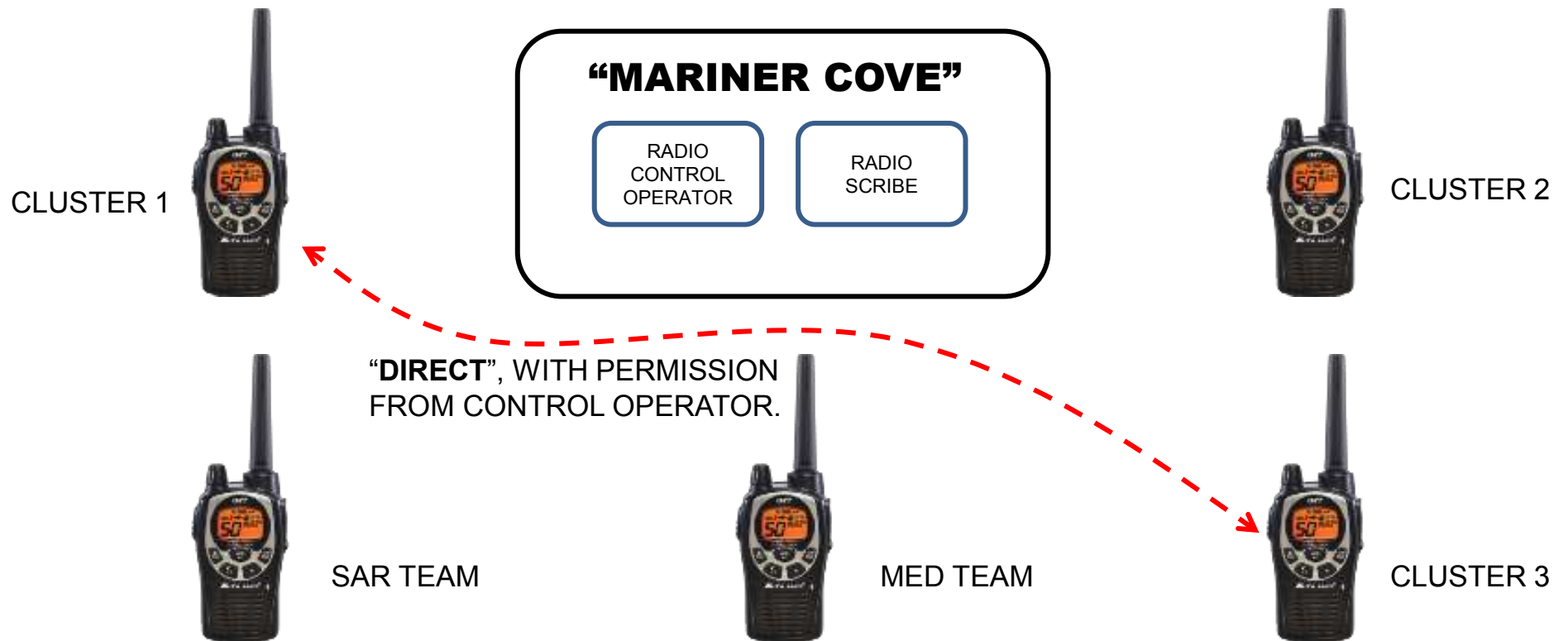
# A SAMPLE NRG NETWORK



## COMMUNICATE THROUGH NET CONTROL

Listen before you transmit | One station talks at a time | Only talk "direct" with permission

# A SAMPLE NRG NETWORK

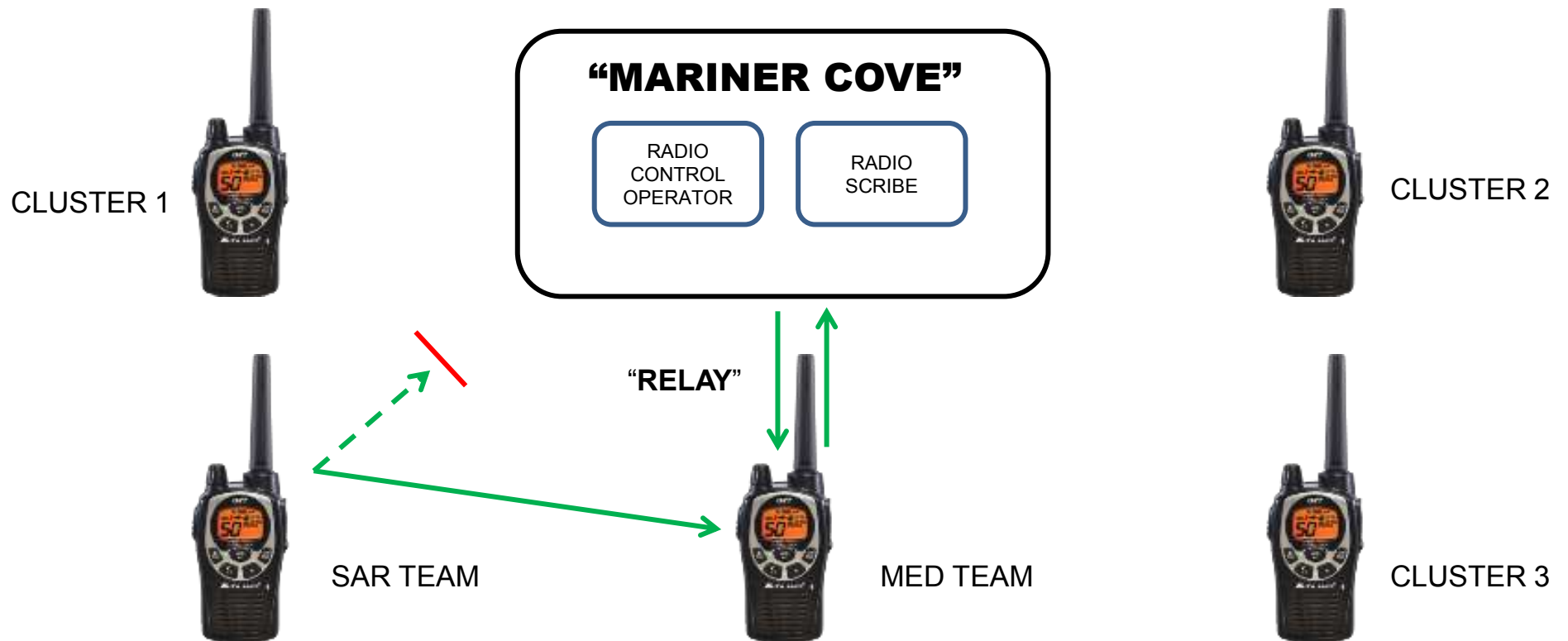


## COMMUNICATE THROUGH NET CONTROL

Direct communications, between two stations, is done after permission from control operator.



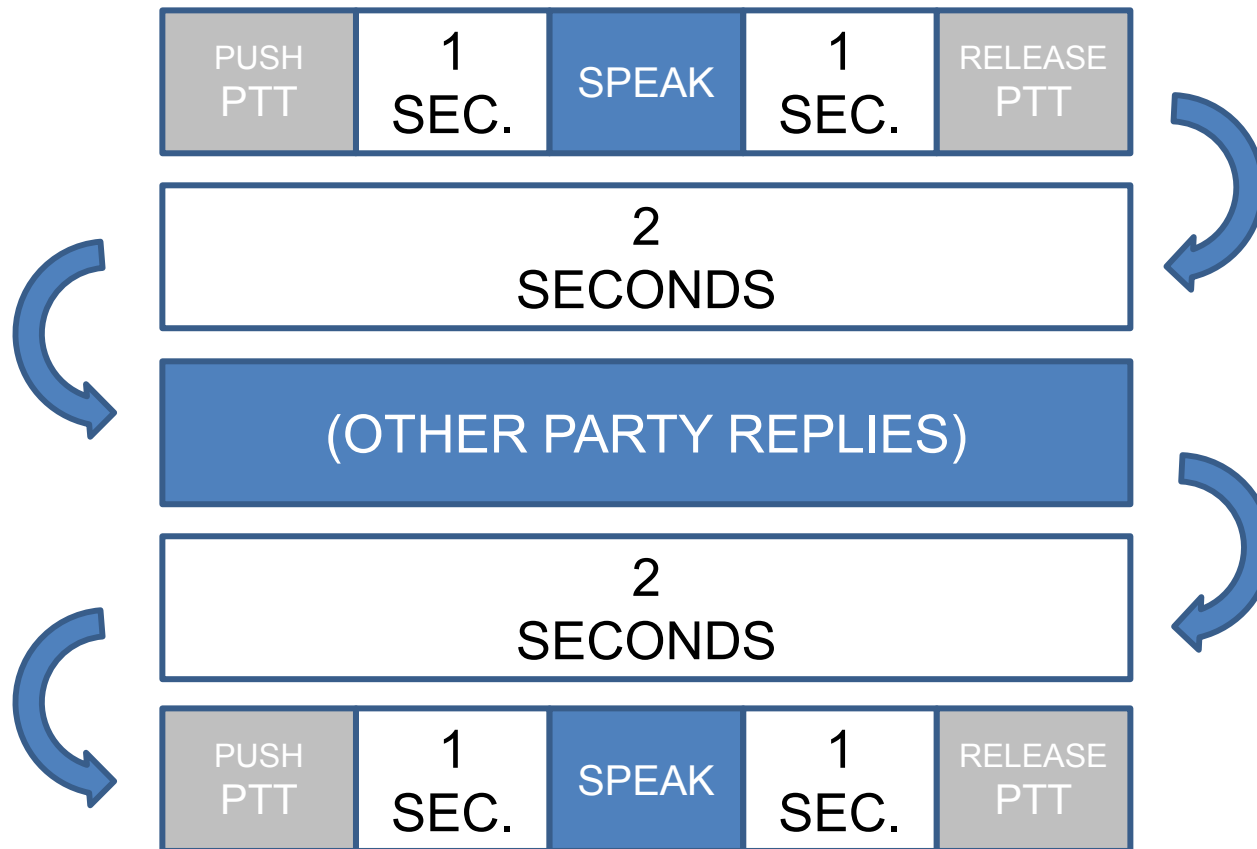
# A SAMPLE NRG NETWORK



## COMMUNICATE THROUGH NET CONTROL

Relay communication to help another station that you can tell control is unable to hear.

# SENDING A MESSAGE: TECHNIQUE



## WHEN YOU TRANSMIT

Go through net control | Net control may be busy with a call you can't hear...Wait, then try again

# SENDING A MESSAGE: CONTENT

- Formulate a **clear, economical message**:
  - **Who** you are calling and who are you.
  - **Where** are you?
  - **Why** are you calling in?
  - **What** are you requesting?
  - **When** do you need it?

Say your message **no faster than it can be written down**, because it will be.

## COMMUNICATION, NOT IDLE CONVERSATION

Know your message before you transmit | Use good radio technique...

# SENDING A MESSAGE: EXAMPLE

CLUSTER 1



*“Mariner Cove, this is **Cluster 1**, over.”*

*“**Cluster 1**, this is **Mariner Cove**, go ahead.”*

*“Mariner Cove, **Cluster 1**. 95 Spindrift Passage. 1 adult with minor cuts and broken leg. Will bandage & immobilize. Please send help to move victim to medical. Over.”*

*“**Cluster 1, Mariner Cove**. Will notify you when help is on its way, over.”*

*“Mariner Cove, **Cluster 1**. Roger. Out.”*

## “MARINER COVE”

RADIO  
CONTROL  
OPERATOR

RADIO  
SCRIBE

## STRUCTURED CONVERSATIONS

Frequent verbal identification | Clear, efficient transmissions



# “PRO” WORDS

<p><b>“This is”</b> to identify yourself.</p>	<p><b>“Over”</b> finished transmitting, awaiting a reply.</p>	<p><b>“Roger”</b> to confirm reception of a transmission.</p>	<p><b>“Out”</b> finished transmitting, not awaiting a reply.</p>
<p><b>“Say again”</b> to request repeat of latest transmission.</p>	<p><b>“Wait”</b> tells other party you are busy for the moment.</p>	<p><b>“Relay”</b> when passing a message between stations.</p>	<p><b>“I Spell”</b> indicates you are about to spell out a word.</p>
<p><b>“Emergency”</b> to interrupt with a <b>life-or-death</b> situation.</p>	<p><b>“Priority”</b> to interrupt with a <b>non life-threatening</b> urgent situation.</p>	<p><b>“Break”</b> to interrupt with a <b>non-urgent</b> situation.</p>	

# RADIO RANGE

A scenic view of a large body of water, likely a bay or harbor, surrounded by green hills and a clear blue sky. A large ship is visible in the distance. The foreground is dominated by dry, brown grass and some green shrubs. The water is a deep blue, and the sky is a clear, light blue. In the far distance, a city skyline is visible across the water.

## MAXIMUM

Line of sight to other radio | High altitude | No obstructions



# RADIO RANGE

A wide-angle photograph of a suburban street. The road is paved and has yellow diagonal markings. On the left, there's a sidewalk with trees and a green tarp. On the right, there are more trees and a silver car. In the background, there are houses and hills under a clear blue sky. Utility poles with wires are visible along the right side of the road.

## **MODERATE**

Some altitude | Low buildings at some distance | Wooden buildings and trees, not metal structures



# RADIO RANGE

## COMPROMISED

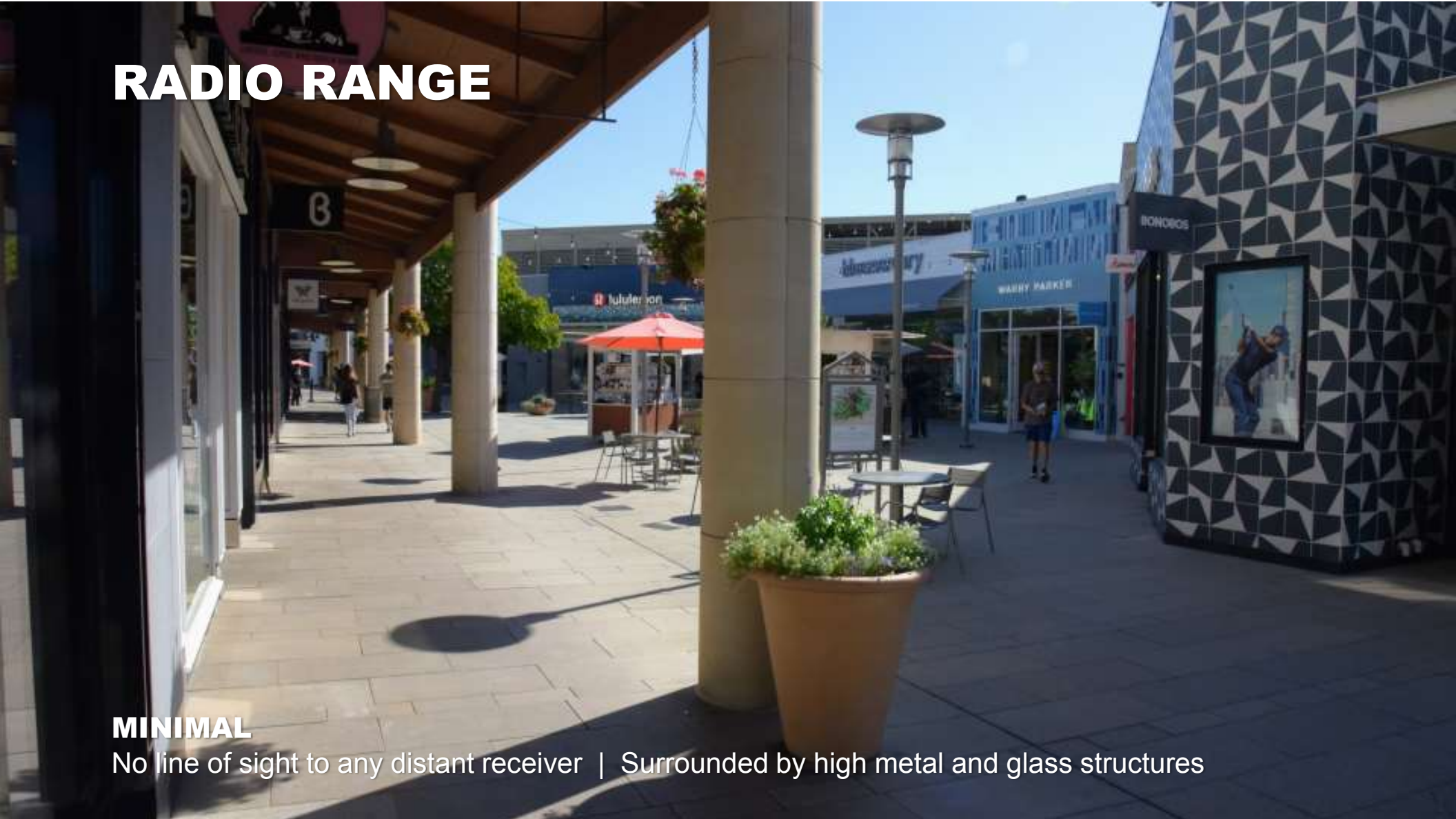
In the shadow of buildings | Lots of metal and glass | Few line of sight targets



# RADIO RANGE

## MINIMAL

No line of sight to any distant receiver | Surrounded by high metal and glass structures





# RADIO ERGONOMICS

**Hold the radio vertically.  
Talk *across* the microphone.  
Keep your body out of the way.**



**HOLD THE RADIO VERTICALLY**  
Don't emulate actors in police shows!





# GOOD BATTERY PRACTICES

1. Store batteries **outside of radio.**
2. Keep **3 full sets** of batteries with radio
3. Use **standard batteries**, *not* rechargeable.



## **BATTERIES ARE YOUR LIFELINE**

Store loose batteries facing the same direction | Consider buying pre-packaged 4-packs

# TROUBLESHOOTING YOUR RADIO

1. Are you on the **correct channel**?
2. Have you set the **correct CTCSS tone**?
3. Is your **volume turned up**?
4. Are your **batteries fresh**?
5. Is **GRP** set to **off**?
6. Is **VOX** set to **off**?

## TOP 6 WAYS RADIOS ARE MISCONFIGURED

Learn how to lock your radio when you have it set up correctly



Ver. 6

# NRG RADIO COMMUNICATIONS

**NRGMarin.org**  
Ver. 6